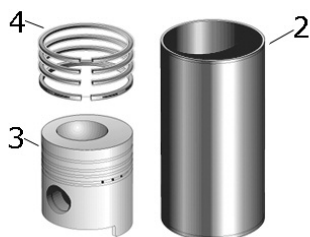
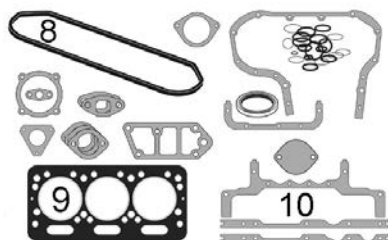


Fiat

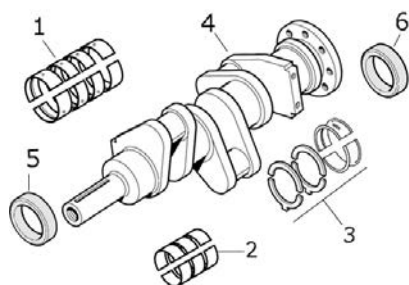
Engine No.	Cylinder			Piston			Type
	Cyl.	Bore mm	Length mm	Pin Ø mm	Length mm	No. of Rings	
8035.06	3	100.00	196.00	38	108.5	3	-
Applications: 45-66, 50-66, 55-66F, 55-76, 55-90, 55-76F							



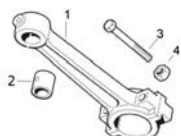
	Description	Notes	OEM Ref:
1			
2	Liner		4770654 S.62034
3	Piston and Ring Set		1930241 S.62022
4	Piston Ring Set		1930169 S.62028



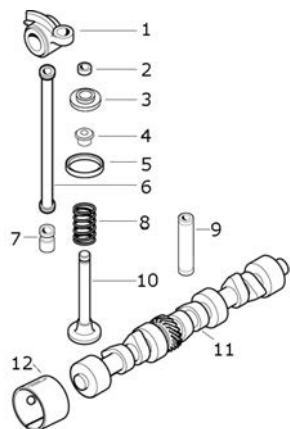
6	Head Gasket Set		1930255 S.62100
7	Complete Gasket Set	100mm Liner, Less Seals, Supercedes S.62099 and Supercedes S.62076	1909590 S.62080
8	Rocker Cover Gasket		4783243 S.62127
9			
10	Sump Gasket		1940006 S.62113



	Main Bearings Pair (Std.)		1930176 S.62049
1	Main Bearings Pair +0.010"		1930177 S.62345
	Main Bearings Pair +0.020"		1930178 S.62454
	Conrod Bearings Pair (Std.)		1930181 S.62043
2	Conrod Bearings Pair +0.25mm		1930182 S.62044
	Conrod Bearings Pair +0.50mm		1930183 S.62451
	Thrust Bearings Set		1901385 S.62053
3	Thrust Bearings Set +0.25mm		1901386 S.58945
4			
5	Oil Seal	65 x 42 x 10mm	98461684 40101331 S.62068
6	Oil Seal	135 x 114 x 12mm	98461686 40101341 S.62073



1	Conrod	Ø38mm Pin	4780624 98461751 S.58941
2	Small End Bush	38mm Piston pin	4766404 S.62038
3			
4			



1			
2	Valve Collet		14196670 S.59051
3			
4			
5			
6			
7			
8	Valve Spring		4780108 S.62066
9	Valve Guide	Inlet & exhaust	4802126 S.62062
10	Inlet Valve		4824417 S.62057
	Exhaust Valve		4784889 S.62060
11	Camshaft	3 Cyl.	4824215 4784946 S.59066
12	Camshaft Bush Set	3 Bushes	4603449 + 4603450 + 4603451 S.62121



13	Engine Oil Pump		4705827 S.62133
----	-----------------	--	------------------------