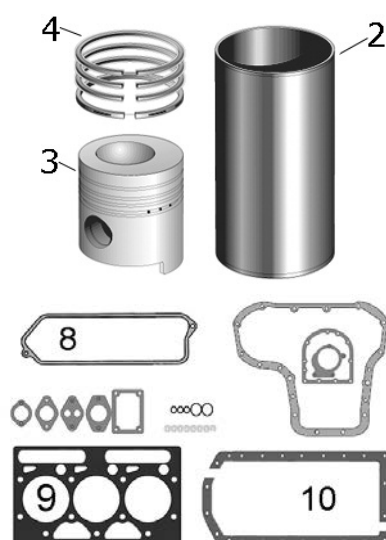


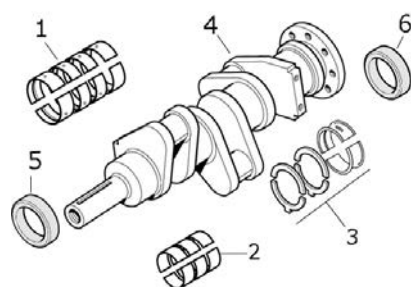
**Ford**

Engine No.	Cylinder			Piston		
	Cyl.	Bore mm	Length mm	Pin Ø mm	Length mm	No. of Rings
220	4	100	222.88	-	118.11	5

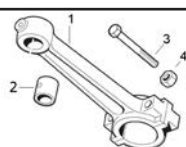
Applications: Super Major, Power Major



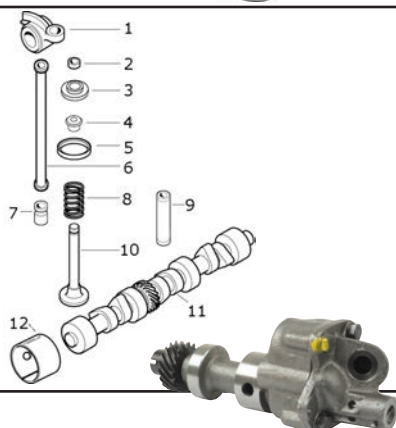
	Description	Notes	OEM Ref:
<b>Ford Super Major, Power Major 1952 to 02/1961 (1.125" Bolt)</b>			
1			
2	Liner		81710301 52>2/61 <b>S.66374</b>
3	Piston		81710338 E1ADDN6102J <b>S.65958</b>
4	Piston Ring Set		81814624 510E6148A <b>S.65952</b>
5	Liner Seal		E1ADKN6061A 52>2/61 <b>S.66563</b>
<b>Ford Super Major, Power Major from 03/1961 to 12/1964</b>			
1			
2	Liner		81710303 3/61> <b>S.65957</b>
3	Piston		81710338 E1ADDN6102J <b>S.65958</b>
4	Piston Ring Set		81814624 510E6148A <b>S.65952</b>
5	Liner Seal		81716221 3/61> <b>S.66045</b>
	Liner Seal		81716220 <b>S.66048</b>
6	Head Gasket Set		81743744 E1ADDN6C037C <b>S.66336</b>
7	Bottom Gasket Set		81780578 E1ADDN6008AK <b>S.66385</b>
8			
9	Head Gasket		81710277 E1ADDN6051C <b>S.65881</b>
10	Sump Gasket		81743591 E1ADDN6781C <b>S.66337</b>



	Main Bearings Set (Std.)		81823481 528E6K371A <b>S.65213</b>
	Main Bearings Set +0.010"		81823483 528E6K371B <b>S.65214</b>
1	Main Bearings Set +0.020"		81823484 528E6K371C <b>S.65215</b>
	Main Bearings Set +0.030"		81823487 528E6K371D <b>S.65216</b>
	Conrod Bearings Set (Std.)		81854542 703F6211BAA <b>S.65189</b>
	Conrod Bearings Set +0.010"		81854543 703F6211BBA <b>S.65190</b>
2	Conrod Bearings Set +0.020"		81854544 703F6211BCA <b>S.65191</b>
	Conrod Bearings Set +0.030"		81854545 703F6211BDA <b>S.65192</b>
3	Thrust Bearings Set		E159Z9 E160Z9 <b>S.66783</b>
4	Crankshaft		81710532 E1ADDN6303F <b>S.66040</b>
5	Oil Seal - Inner Halfshaft	65.7 x 89.13 x 12.6mm	510E6362 <b>S.41549</b>
6	Rope Seal Set 2pcs		81854827 508E6702 <b>S.65685</b> 793F6701AAA



1			
2	Small End Bush	1.375" Piston pin	81710453 E1ADDN6207 <b>S.65235</b>
3			
4			



1			
2			
3			
4			
5			
6			
7	Valve Tappet	Camshaft follower	E1ADKN6489B <b>S.66712</b>
8	Valve Spring outer	Outer	81710787 E1ADKN6513B <b>S.65708</b>
9	Valve Guide		81710777 E1ADDN6510A <b>S.66779</b>
10	Inlet Valve		81710772 E1ADDN6507 <b>S.65699</b>
	Exhaust Valve		E1ADDN6505A <b>S.65871</b>
11	Camshaft	One bolt Hole	528E6205D <b>S.61038</b>
13	Engine Oil Pump	With Relief Valve	81745498, E1ADDN6616 <b>S.65878</b>