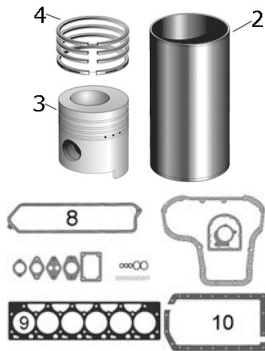
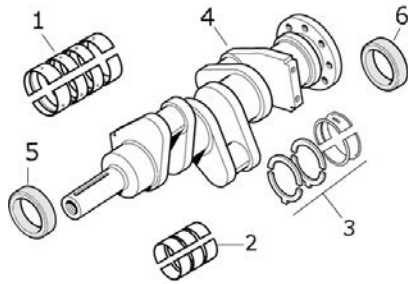


Ford	Engine No.	Cylinder			Piston			
		Cyl.	Bore mm	Length mm	Pin Ø mm	Length mm	No. of Rings	Piston Type
	PowerStar 7.5	6	111.76	205.6	38.087	-	3	Unhoned, Semi Finished Liner

Applications: (8010 to 05/98) 8240, 8340 without Turbo, TS115 (also some 8160, 8240 and 8260)



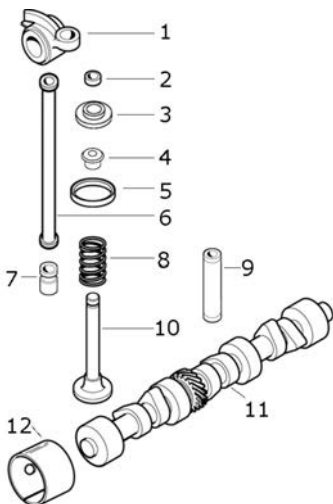
	Description	Notes	OEM Ref:
1			
2	Liner		83998292 S.66527
3	Piston (Al-Fin Ring)		82850253 S.66521
4	Piston Ring Set		87802355 87801095 S.66525
6			
7	Bottom Gasket Set	Supercedes S.66547	83933429 ECPN6A008AA S.66310
8			
9	Head Gasket	112mm Liner	83982127 E9NN6051BA S.65848
10			



	Main Bearings Set (Std.)		81877667 x 1 87790260 x 6 S.66531
1	Main Bearings Set +0.010"		83991740 x 1 83991734 x 6 S.66532
	Main Bearings Set +0.020"		83991741 x 1 83991735 x 6 S.66533
	Conrod Bearings Set (Std.)	Later Type Ø 32mm. Supercedes S.66537	87790322 FAPN6211G S.66077
	Conrod Bearings Set +0.010"	Supercedes S.66538	87790324 FAPN6211J S.66078
2	Conrod Bearings Set +0.020"	Supercedes S.66539	87790325 FAPN6211K S.66079
	Conrod Bearings Set +0.030"		87790326 FAPN6211E S.66080
	(Ford 8010 >05/1998), TS115		
4			
5	Oil Seal	83 x 58 x 11.3mm	81815927 C5NN6700A S.65672
6	Oil Seal	141 x 120 x 11.3mm	83955247 E5NN6701BA S.65673



1			
2			
3			
4			



	Rocker Arm	Inlet	83956710 D9NN6259AB S.66780
1	Rocker Arm	Outlet	81804316 C5NE6529A S.66781
2	Valve Collet		81876796 C1AE6518A S.66758
3			
4			
5			
6			
7	Valve Tappet	Camshaft follower	83946434 C7NN6500B S.65306
8	Valve Spring outer	From 09/91	83999742 E9NN6513BA S.66028
9			
	Inlet Valve		81865092 E9NN6507AC S.66540
10	Exhaust Valve		81865085 E9NN6505EC S.66543
11			
12	Bush	Camshaft	87800499 C5NE6261B S.65872

13			
----	--	--	--